

City of Chilliwack Road Work Permit
Additional Terms and Conditions

Attachment 1

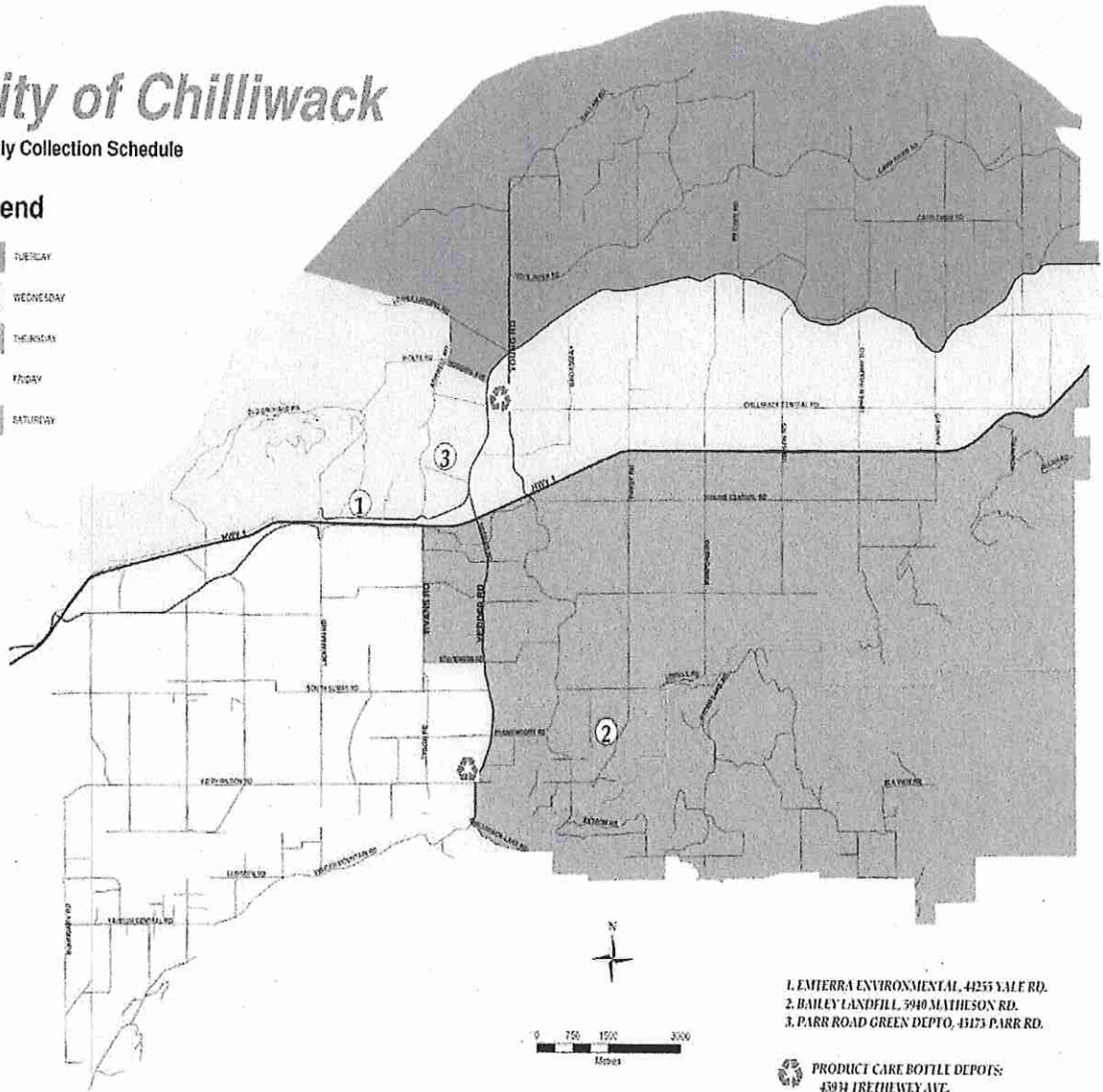
Municipal Collection of Waste (by day of week)

City of Chilliwack


Weekly Collection Schedule

Legend

-  TUESDAY
-  WEDNESDAY
-  THURSDAY
-  FRIDAY
-  SATURDAY

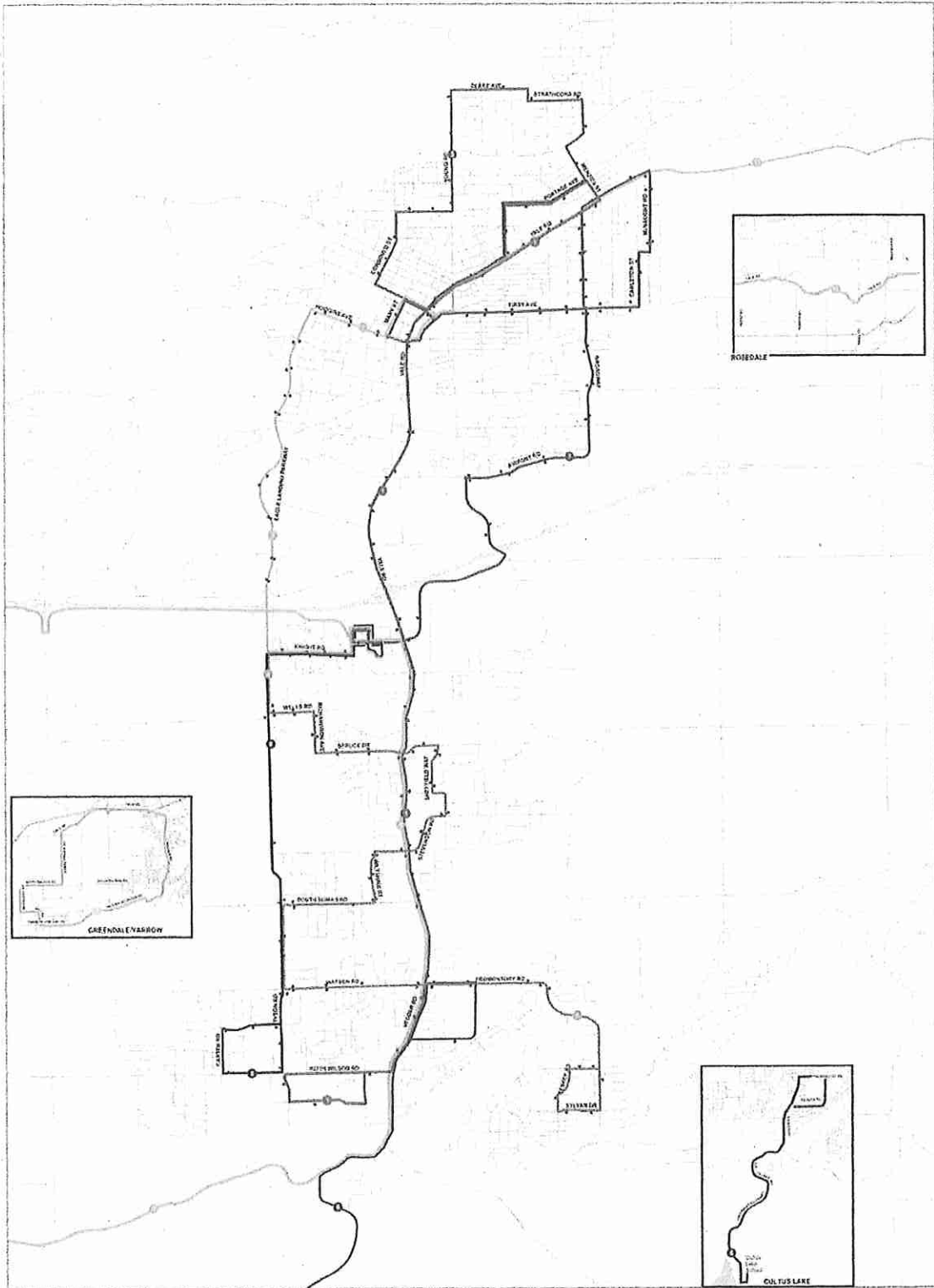


- 1. EMERRA ENVIRONMENTAL, 41255 YALE RD.
- 2. BAILEY LANDFILL, 5940 MATHESON RD.
- 3. PARR ROAD GREEN DEPOT, 41173 PARR RD.

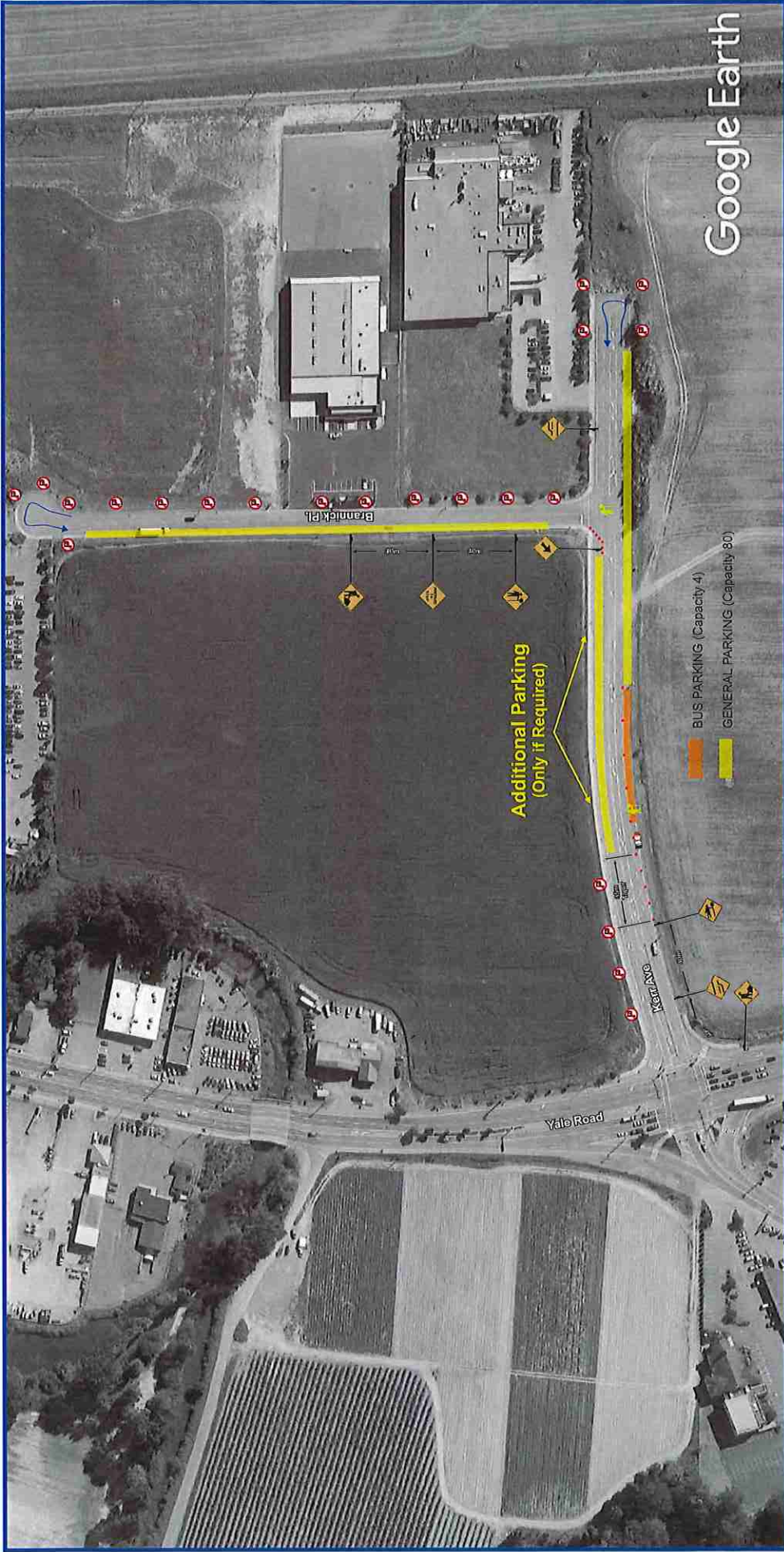
 PRODUCT CARE BOTTL DEPOTS:
43934 IRETHWEY AVE.
456135B LARK RD.

City of Chilliwack Road Work Permit
Additional Terms and Conditions

Attachment 2



November 2013



DRAWING SPECIFIC NOTES

- TCP's will direct motorists including buses on where to park.
- TCP's will assist pedestrians across Kerr Rd.

GENERAL NOTES

- All traffic control shall conform to the TCM and the latest catalogue for Standard Traffic Signs
- Signs shown are representations of signs only and the MOTI Construction Sign Catalogue should be used for detailed sign design
- All dimensions shown are in meters and are the minimum except as otherwise indicated. The works are in effect
- Active Work Zones and Hazards shall be delineated to protect workers and the travelling public
- Maximum distance between cones/delineator/barrel should be 10m
- Tubular markers and signs will be double based and well secured during windy conditions
- Distances may be altered to suit site conditions
- These pages are best printed on a tabloid (11x17) page size

LEGEND

| | | | |
|--|---------------------------|--|----------------------------|
| | TRAFFIC CONTROL PERSONNEL | | TRAFFIC BARREL |
| | SIGN STAND (TRIPOD) | | TUBULAR MARKER - TYPE D |
| | SIGN STAND (WINDMASTER) | | TRAFFIC CONTROL VEHICLE |
| | SIGN FLAGS | | FLASHING ARROW BOARD (FAB) |
| | BUS PARKING | | EXISTING BUS STOP |
| | GENERAL PARKING | | RELOCATED BUS STOP |

| | | | |
|----------------------------------|----------------------------|---|-------------------------------------|
| TRAFFIC CONTROL PLAN | Contractor Name: | TCF # | Date: |
| DATE OF LAST REVISION | The Devins Network | TCP 1 of 1 | April 25th, 2017 8am to 12pm |
| 2017-04-05 | Job Description: | Event Parking & Traffic Management | Location: |
| | | Molson Coors "Ground Breaking" Event | Kerr Rd, Chilliwack |
| Streetwise | Contractor Contact: | Phone: | Email: |
| TRAFFIC CONTROLLERS, INC. | Ferg Devins | 416-528-5961 | Ferg@thedevinnetwork.com |
| TRAFFIC PLAN | Tehjay Fox | 604-799-6750 | Tehjay@StreetwiseTraffic.ca |